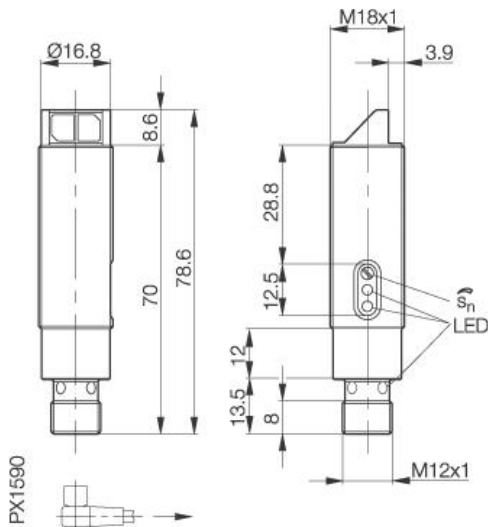


**Photoelectric Sensor**  
**BLS 18MR-XX-1P-E5-L-S4**  
**Sn=16000mm**  
**through-beam, transmitter**



**Common Data**

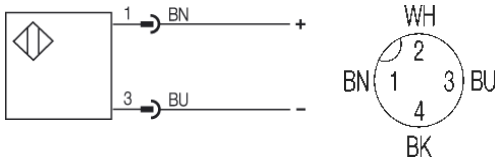
Series	18MR
Sensortype	through-beam, transmitter
Rated operating distance Sn in mm	16000
asured operating distance Sa	16000
Ambient temperature	-25...+55°C
Light	Red light

**Mechanical Data**

Measurements	M18x78,6
Shock	Halfsinus, 30gn, 11ms
Vibration	10...55Hz, 1,5mm Amplitude 3x2h
Housing material	nickel plated brass
Material of sensing face	Glass
Degree of protection	IP67
Connection	Connector S4 (M12)
Weigth	57g

**Electrical Data**

Current	DC
Rated operational voltage Ue	24V
Supply Voltage	10...36V DC
Ripple	< 20% from UB
Frequency of Supply Voltage	DC
No-load supply current	<20mA
Protected against polarity reversal	yes



Utilization categories  
 Insulation class

DC13

Datasheet number:

Definitions see general catalog.  
 If not otherwise noted, ratings according to  
 IEC 60947-5-2 (DIN EN60947-5-2)

Balluff GmbH  
 Schurwaldstrasse 9  
 73765 Neuhausen a.d.F.  
 Phone (07158) 173-0 Fax (07158) 5010

Datenblatt by CD-ROM - 04/2007

**BALLUFF**  
 sensors worldwide